



# Solar Street Light

INNOVATIVE DESIGN / PATENT PROTECTED / GLOBAL LEADING TECHNOLOGY

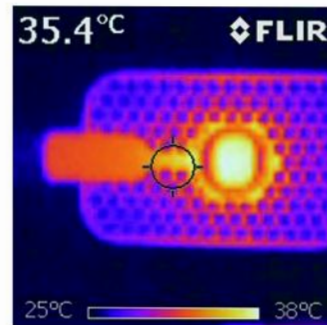


## STREET LIGHT **KC-F1**

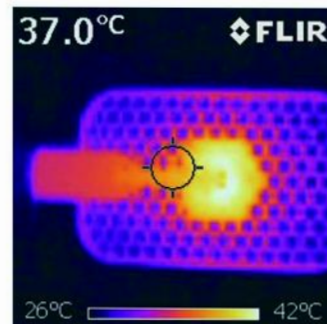
### Lamp Parameters

- Housing material: ADC 12 die-casting aluminum
- Lens material: High borosilicate glass 3.3
- Lens diameter:  $\Phi 92$
- Light source type: 5003 support integrated/single light source
- Input voltage: DC 28V–36V
- IP rating: IP65
- Lamp power: 20W–60W
- Lamp dimensions: 484mm\*260mm\*80mm
- Weight: 2.4KG
- Working temperature:  $-40^{\circ}\text{C}$ – $70^{\circ}\text{C}$
- Application:** road lighting of villages, township roads, residential areas, parks and factories.
- Recommended installation height:** 20W–60W lamps 4–7m.

Temperature rise  
(Power: 40W)



Front



Back



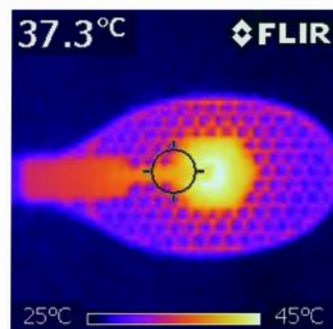
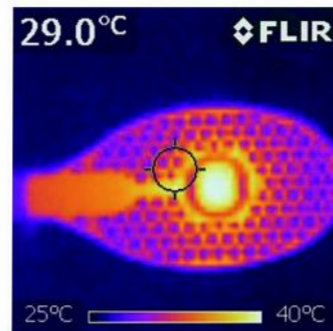


## STREET LIGHT KC-Q1

### Lamp Parameters

- Housing material:  
ADC 12 die-casting aluminum
- Lens material: High borosilicate glass 3.3
- Lens diameter:  $\Phi 92$
- Light source type:  
5003 support integrated/single light source
- Input voltage: DC 28V–36V
- IP rating: IP65
- Lamp power: 20W–80W
- Lamp dimensions: 530mm\*260mm\*80mm
- Weight: 3.4KG
- Working temperature:  $-40^{\circ}\text{C}$ – $70^{\circ}\text{C}$
- Application:** road lighting of villages, township roads, residential areas, parks and factories.
- Recommended installation height:** 50W–80W lamps 5–8m.

Temperature rise  
(Power: 50W)



**KASAB**

Green Energy Solutions

KASAB INTERNATIONAL ENERGY SERVICES

Al Sharq Tower, 6th Floor, King Abdullah Street, Al Khobar, Kingdom of Saudi Arabia  
Tel +966 508420888 Email: info@k-ges.com Website: k-ges.com



## STREET LIGHT **KC-Q2**

### Lamp Parameters

Housing material:  
ADC 12 die-casting aluminum

Lens material: High borosilicate glass 3.3

Lens diameter:  $\Phi 92$

Light source type:  
5003 support integrated/single light source

Input voltage: DC 28V–36V

IP rating: IP65

Lamp power: 60W–160W

Lamp dimensions: 610mm\*280mm\*88mm

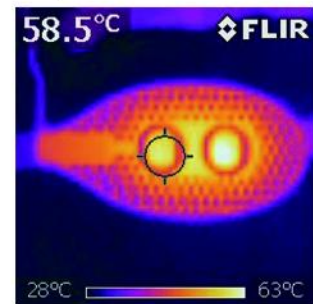
Weight: 4.8KG

Working temperature:  $-40^{\circ}\text{C}$ – $70^{\circ}\text{C}$

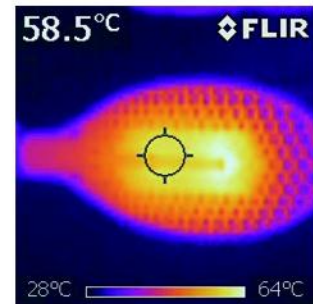
**Application:** township roads, urban secondary roads, parks, factories, etc.

**Recommended installation height:** 100W–160W lamps 8–11m.

Temperature rise  
(Power: 120W)



Front



Back

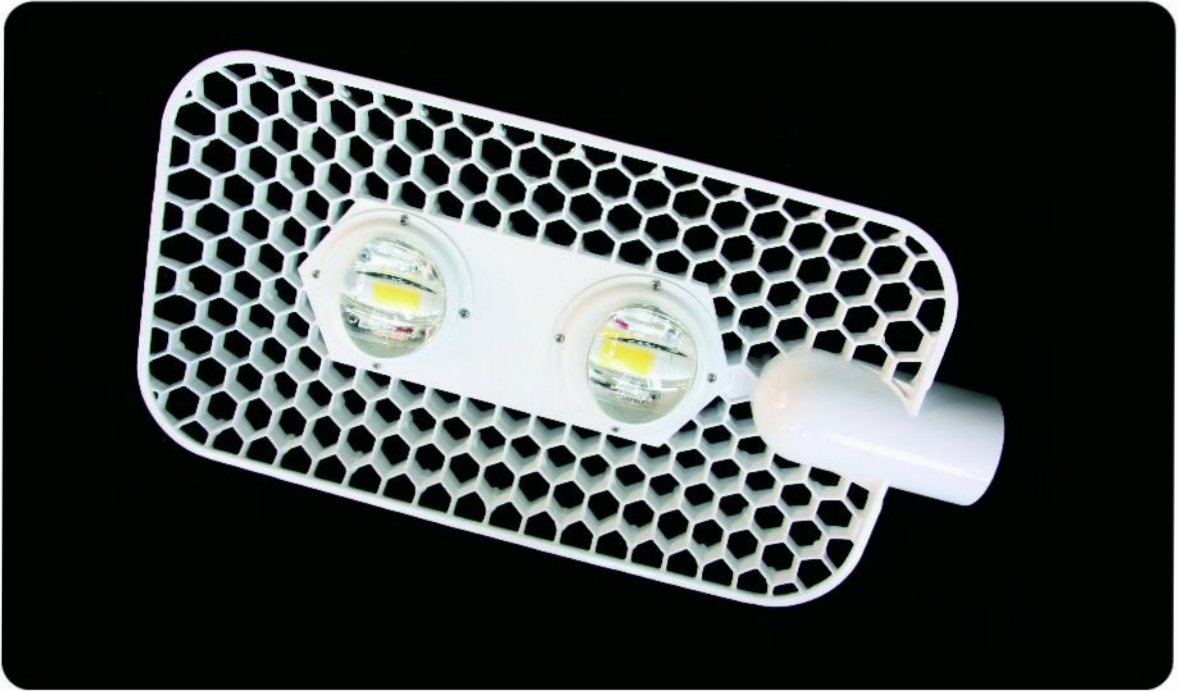


**KASAB**

Green Energy Solutions

KASAB INTERNATIONAL ENERGY SERVICES

Al Sharq Tower, 6th Floor, King Abdullah Street, Al Khobar, Kingdom of Saudi Arabia  
Tel +966 508420888 Email: info@k-ges.com Website: k-ges.com



**STREET LIGHT KC-F2**

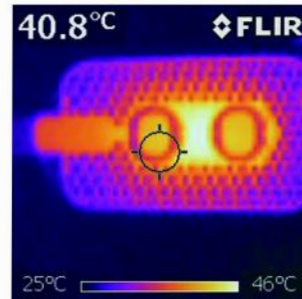
**Lamp Parameters**

- Housing material:  
ADC 12 die-casting aluminum
- Lens material: High borosilicate glass 3.3
- Lens diameter:  $\phi 92$
- Light source type:  
5003 support integrated/single light source
- Input voltage: DC 28V-36V
- IP rating: IP65
- Lamp power: 60W-120W
- Lamp dimensions: 570mm\*280mm\*80mm
- Weight: 4.0KG
- Working temperature:  $-40^{\circ}\text{C}-70^{\circ}\text{C}$

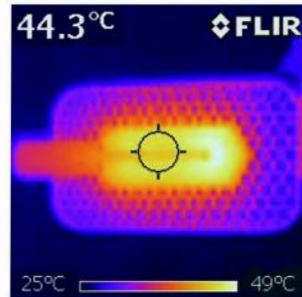
**Application:** road lighting of villages, township roads, residential areas, parks, factories, etc.

**Recommended installation height:** 60W-120W lamps 8-9m.

Temperature rise  
(Power: 80W)



Front



Back



**KASAB**

Green Energy Solutions

KASAB INTERNATIONAL ENERGY SERVICES

Al Sharq Tower, 6th Floor, King Abdullah Street, Al Khobar, Kingdom of Saudi Arabia

Tel +966 508420888 Email: info@k-ges.com Website: k-ges.com