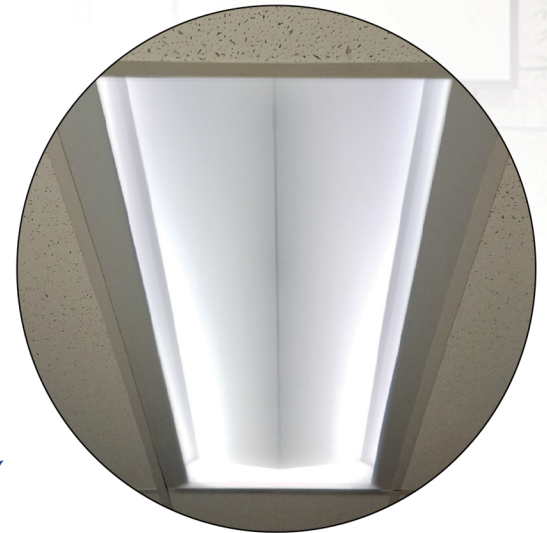




**RK-LED Series
TROFFER RETROFIT KIT**

LED Retrofit using patented WhiteOptics® reflector technology helps building owners slash energy cost dramatically, without sacrificing light levels or aesthetics.

- Unique indirect design utilizing White98® surface technology enables high efficiency
- High diffuse reflection allows even light distribution, minimal glare and hotspots.
- Fits into most existing 2x4 and 2x2 troffers
- Integrated drivers allows bypass of existing fluorescent ballast
- Fast, simple install
- No maintenance required with long-life, low temperature LED technology



Installs into existing prismatic and parabolic troffers for substantial energy savings

EXISTING FIXTURE	REPLACED WITH	SAVINGS
4 lamp F40T12 = 160 watts	WO-RKLED 2X4 36 watts	78%
4 lamp F32T8 = 128 watts		72%
3 lamp F32T8 = 96 watts		63%
2 lamp F32T8 = 64 watts		44%
2 lamp F32T8U = 64 watts		WO-RKLED 2x2 20 watts

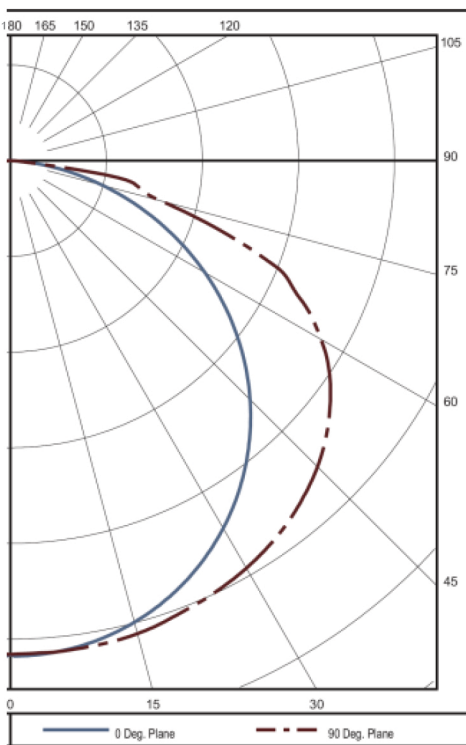
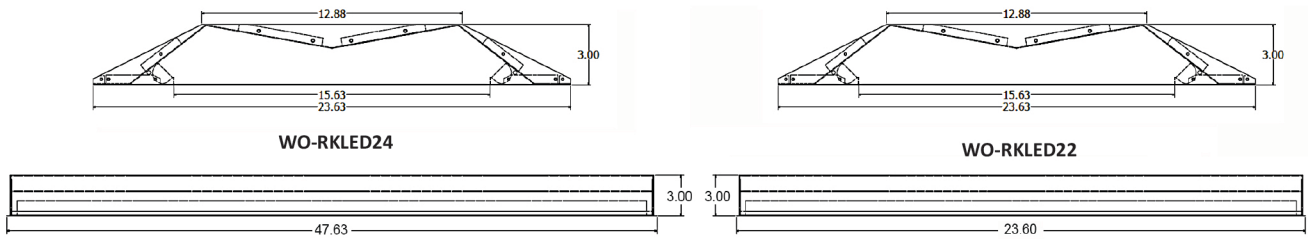
INTENDED USE — The RKLED series assembly is the ideal solution for renovating existing fluorescent troffer and parabolic systems, delivering improved quality of light and energy savings. The RKLED series is recommended for offices, schools, hospitals, and other general lighting applications where existing 2x4 troffer and parabolic fluorescent fixtures are currently in use.

CONSTRUCTION — WhiteOptics® 20-gauge high reflectance surface cold-rolled steel with white enamel backside paint.

ELECTRICAL — Long-life LEDs, coupled with high-efficiency drivers, provide superior quantity and quality of flicker-free illumination for extended service life and low EMI.

INSTALLATION — After existing fluorescent lamps are removed and ballast is disconnected, wiring connection is made. Included hurricane mounting cable can be used to affix assembly to existing fixture to free hands during wiring connection. The assembly is then inserted along the edges between the existing fixture and ceiling grid.

LISTINGS — CSA



ZONAL LUMEN SUMMARY (RKLED 2X4)

Zone	Lumens	% of Luminaire
0-30	1413	30%
0-40	2047	37%
0-60	2967	69%
0-90	4300	100%
90-180	0	0%
0-180	4300	100%

Photometrics available upon request

SPACING CRITERION:

0°	1.28	90°	1.43
180°	1.28	90°	1.43

Type	Voltage	Power	Color (CCT)	CRI
WO-RKLED24	110 to 277v	36 watts	4000K	>80
WO-RKLED22	110 to 277v	20 watts	4000K	>80

Specifications subject to change without notice. Actual performance may differ as a result of end-user environment and application. All values are design or typical values, measured under laboratory conditions at 25 °C.



KASAB INTERNATIONAL ENERGY SERVICES

Al Sharq Tower, 6th Floor, King Abdullah Street, Al Khobar, Kingdom of Saudi Arabia
 Tel: +966-508420888 / +966-138977126 | Email: info@k-ges.com | Website: www.k-ges.com